

e58 MS-H245

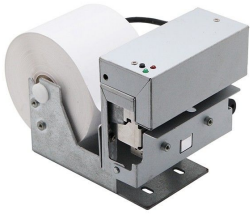
TICKET PRINTER



Ticketing Series

58mm ticket printer

Industrial Components



Thermal printer for 58mm wide ticket printing. Auto cutting system. Seiko 245 printhead.

Specially designed for integration in kiosks, atm, etc. Horizontal ticket output. Good quality printer at a very competitive price.



TECHNICAL SPECIFICATIONS

OTHER TECHNICAL DATA

I/O PORTS

Direct Importer: Grupo EOS Ibérica

Interface: Dual Serial (RS232C) and USB 2.0.

Operating Voltage: DC 9"24V/2.5A.

External dimensions: 117.85*103.5*93 mm.

Weight: Approximately 450g.

Interface: RS-232 /USB.

Command set: ESC/POS.

Buffer: 4 KB.

SRAM: 20 KB.

Driver: USB driver.

Supported systems: Windows/Linux/Android OS.

GENERAL INFORMATION:

Anti-jam cutter.

Operating temperature: -10°C to + 50°C.

Paper thickness: 54 - 91 microns.

Printing method: direct thermal.

Printing speed: 150 mm/s.

Number of dots per line: 384.

Paper width: 58mm (adjustable).

Printing width: 48 mm.

Paper roll diameter: 80 mm.

Paper roll thickness: (0.06-0.10mm thickness).

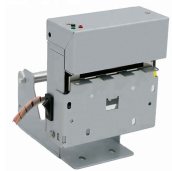
Cutting method: full and partial cut (selectable command).

Print head life: 100 km.

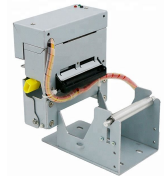
Barcode:

PC-A, UPC-E, EAN(JAN-13), EAN(JAN-8), CODE39, ITF, CODEBAR, CODE128, QR code.

Drivers: Windows *XP / Vista / 7 / 10 / CE 6.0, Linux (CUPS).



Front



Rear

BEZEL OPTIONS



MOST COMMON APPLICATIONS

- > Banking applications.
- > Sports betting.
- > Car parks.
- > Petrol stations.
- > Retail.
- > Transport.
- > Vending.

PRODUCT VALUES

- > Compact format.
- > Robust, reliable design.
- > Head opening for easy handling.
- > Sensors: Temperature / End of paper.

SOME SUCCESS STORIES

- > Kiosks for shift management.
- > Unattended kiosks.

ALTERNATIVE REFERENCES

- > e80 NP3411.
- > e80 MS-V.

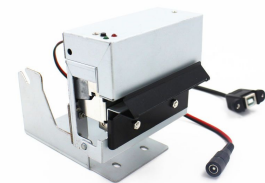
CERTIFICATIONS



CONNECTIONS

DIMENSIONS

DIMENSIONS



USB



RS232C

