



Elevation

Multi-technology motorised reader for RFID, Chip and Magnetic cards.  
 Front and rear card insertion/ejection.  
 Non-standard card processing, power failure protection.  
 Read/write Chip and RFID card.  
 Read only for magnetic card.  
 All cards can be combined.  
 Automatic card capture, ejection and recycling.



TECHNICAL SPECIFICATIONS

OTHER TECHNICAL DATA

TEST

Direct Importer: EOS Group Iberica

Input voltage: DC 12V ± 5%.  
 Power consumption Static current: 110 mA  
 Maximum current: <1.5 A  
 Card transport speed: 70cm / s  
 Communication interface: RS232

OS: Windows 7, 8, 10, Linux Compatible.  
 Warranty: 1 Year (extendable up to 3 years).

Supported card sizes:  
 Width: 53.92~54.18 mm.  
 Length: 85.47~85.90 mm.  
 Thickness: 0.4mm ± 1.20 mm.

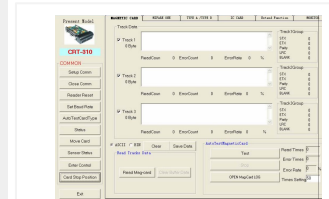
Magnetic card reading performance: TC-J1 15% / BB 30% SI / TC-A 30%.

**Life time**  
 Transport: minimum 500,000 times, cycle: round trip.  
 Magnetic head: minimum 500,000 times.  
 IC card pressure and IC contact: minimum 300,000 times.  
 Power Discharge Condition Power Supply less than 10 V, more than 50 MS

**Error rate**  
 Magnetic card: in normal environment (15 ~ 25 °C, 35 ~ 60% RH), error rate less than 1/1000 (perfect card test)  
 Notes: Standard magnetic card, not including manual error.  
 IC card: less than 1/1000 Notes: standard IC card  
 RF card: less than 1/1000. Notes: Standard RF card

**Ambient operation**  
 0 °C 50 °C, 0 ~ 90% RH (no condensation)  
 Storage: -25 °C ~ 80 °C, 0 ~ 95% RH (non-condensing, air dry if humidity is present)  
 Normal environment: 15 ~ 25 °C, 35 ~ 60% RH

**Cards**  
 Compatible IC card standard ISO7816 compliant. For example, AT24C01, 24C02... 24C256; SLE4447, SLE4428CPU T = 0 / T = 1. Compatible RF card standard Compliant with ISO14443-3 (TYPE A: For example, S50, S70, UL) Compliant with ISO14443-4 (CPU TYPE A: e.g. Mifare plus, Mifare defire) CPU TYPE. Supported magnet card standard: Physical properties: Complies with ISO7810 and 7811 Card size: Complies with ISO7810ID-1 Embossing: Complies with ISO7811-1 ISO7811-3 Recording standard: Complies with ISO7811-2, ISO7811-4, ISO7811-5 -6



BEZEL OPTIONS

CRT-380C



CRT-380B



MOST COMMON APPLICATIONS

- > Batch programming of cards.
- > Automatic vending machines.
- > Parking system.
- > Card dispenser.
- > Access control system.

VALORES DE PRODUCTO

- > Certificado EMV.
- > Diseño robusto, antivandálico.
- > Bloqueo de tarjeta durante lectura.
- > Sistema de expulsión de tarjeta automática.

SOME SUCCESS STORIES

- > Integration of motorway payment terminals.
- > Unattended kiosks.

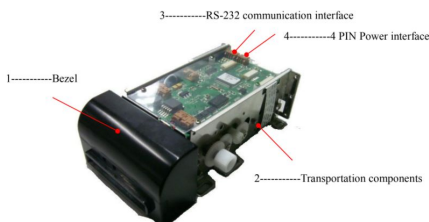
ALTERNATIVE REFERENCES

- > Lector CRT-571.

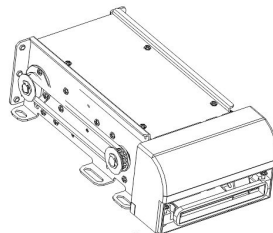
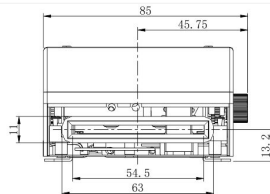
CERTIFICATIONS



DIMENSIONS



DIMENSIONS



DIMENSIONS

