

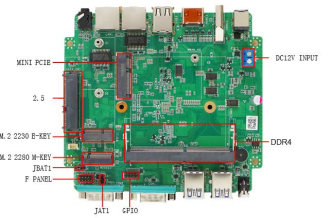


Elevation

Industrial PC with INTEL N100 processor up to 3.4GHZ (Quad Core / 4 threads). Current equipment with 12th generation processor.

Rugged fanless computer in grey aluminium chassis, with passive cooling system without the use of fans for total noise elimination.

It has double HDMI video output for the connection of 2 monitors. Maximum RAM memory possibility 16gb. It has double RJ45 network card and 2 RS232 COM ports. Possibility of m.2 wifi and 4G/GPS mPCIe.



Indoor

TECHNICAL SPECIFICATIONS

Direct Importer: Grupo EOS Ibérica SA
Processor: Intel N100 3.4Ghz
Resolution: 4096 x 2160@60Hz
RAM: Supports up to 16GB SODIMM DDR4/3200
ROM: SSD SATA 2.5 / SSD M.2 / HDD SATA
Audio: 1x Jack 2.5; Speakers
Socket: 1x RAM / 1x 2.5 SATA / 1x MiniPCIe (4G/GPS) / 1x m.2 2230 (wifi) / 1x m.2 2280 (ssd nvme)
Ports: 4xUSB 3.0+2x2.0/ 2xHDMI / 2x COM LAN: 2xRJ45
OS: Windows 7, 8, 10, 11, Linux Compatible
Power Supply: DC100-240V AC input / DC12v/5A output
Power Consumption: ~ 12-20 watts
Vibration: Very resistant to vibrations
Humidity: 0% ~ 95% (non-condensing)
Operating Temp.: 50°C
Storage Temp.: -20°C~85°C
Warranty: 1 Year (Extendable up to 3 years)

OTHER TECHNICAL DATA

Anchoring Type: Embedded (Built-in) yes, VESA yes, RACK no.
Processor Frequency: Minimum 1.6Ghz, maximum 2.24Ghz.
Graphic: Integrated Intel UHD 750 MHz
RAM: 0 Gb on Board + 1 SODIMM/1.35v Socket (4/8/16Gb ddr4)
ROM: SSD SATA / SSD M.2 (120, 240Gb..) / HDD SATA (500Gb, 1Tb) * Consult other capacities.
Audio: Realtek HD ALC662. 1 x Line-out
LAN: Intel i225-V 2.5G. Wake on lan
IP Protection: IP50. Dust entry cannot be avoided, but it must not enter in such a quantity that it interferes with the correct operation of the equipment. No water protection. Waterproof case: For greater IP protection (OPTIONAL)
Wireless: Intel Wireless-Ac 9560 - Network card, M.2 2230 (OPTIONAL)
GPS: Mini PCI Express u-Blox pci-5s-1- 500. (OPTIONAL)
4G/GPS: Mini PCI Express Quectel EC25-E. (OPTIONAL)
Dimensions: 150 x 126.50 x 45 mm (LxWxH)
Weight: 0.65 Kg
Packing: Individual box; PC, Power supply, Power cable, Drivers and a **VESA bracket** to mount the PC on a monitor. Possibility of **DIN rail** mounting with accessory (optional).

I/O PORTS

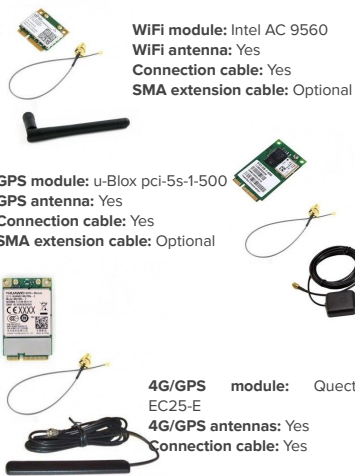


Frontal



Rear

CONNECTIVITY OPTIONS



PRODUCT VALUES

- > 12th generation processor
- > Resistant to aggressive environments; dust, grease, vibrations.
- > Resistant to extreme temperatures and humidity.
- > Expandable equipment in its configuration, up to 16gb of RAM memory.
- > Possibility of Wi-Fi and 4G / GPS connection at the same time.
- > Very low power consumption.
- > Significant number of USB / COM connections

MOST COMMON APPLICATIONS

- > Interactive, multimedia kiosks
- > Unattended self-checkout kiosks
- > Industrial control systems (ICS)
- > HMI control panels
- > Distributed control systems / SCADA
- > Data acquisition systems (DAQs)
- > Integration in electrical panels
- > Factory assembly lines
- > Assembly in transport vehicles
- > Wireless station (Wifi/4G/GPS)
- > Outdoor advertising and Digital Signage.

APPLICATION SECTORS

- > Kiosk industry
- > Aerospace
- > Automotive
- > Data Centers
- > Distribution
- > Naval Sector
- > Pharmaceutical Industry
- > Transport and Logistics
- > Meat Industry
- > Fishing vessels
- > Shipyards

SOME SUCCESS STORIES

- > Advertising totem
- > Unattended kiosk with double screen
- > Integration into production lines

ALTERNATIVE REFERENCES

- > Pc industrial J3160
- > Pc industrial J6412
- > Pc industrial i5 7360U

CERTIFICATIONS



CONNECTIONS



ANCHOR TYPE

VESA mount (included)



DIN accessory (optional)



DIMENSIONS

