

MINI PC Series

Fanless Industrial Computers

Industrial Components



Elevation

Industrial PC INTEL Pentium N3530 2.16GHZ 3rd generation with N3530 processor (Quad Core / 4 threads).

Rugged fanless computer in black aluminum chassis, with passive cooling system without the use of fans for total noise elimination.

It has double HDMI and VGA video output for the connection of 2 monitors. Possibility of expanding RAM memory to 8gb. It has double RJ45 network card and RS232 COM port.



Indoor

TECHNICAL SPECIFICATIONS

OTHER TECHNICAL DATA

I/O PORTS

**Direct Importer:** Grupo EOS Ibérica SA

- Processor:** Intel Pentium N3530 2.16 GHZ
- Resolution:** 1920x1080 Mpx
- RAM:** Supports up to 8GB SODIMM DDR3/2800
- ROM:** SSD SATA / SSD MSATA / HDD SATA
- Audio:** 1x Jack 2.5; Speakers
- Socket:** 1x RAM / 1x SATA / 1x MiniPCIE / 1x mSATA
- Ports:** 2xUSB 3.0+4x2.0/ 1xHDMI/1xVGA/ 1x COM LAN: 2xRJ45
- OS:** Windows 7, 8, 10, Linux Compatible
- Power Supply:** DC100-240V AC input / DC12v/6A output
- Power Consumption:** ~ 12-25 watts
- Vibration:** Highly vibration resistant
- Humidity:** 0% ~ 90% (non-condensing)
- Operating Temp.:** 50°C
- Storage Temp.:** -20°C~85°C (SSD)
- Warranty:** 1 Year (Extendable up to 3 years)

- Anchoring Type:** Embedded (Built-in) no, VESA yes, RACK no.
- Processor Frequency:** Minimum 2.16Ghz, maximum 2.58Ghz.
- Graphics:** Integrated Intel HD Z3700 series
- RAM:** 0 Gb on Board + 1 SODIMM/1.35v Socket (4/8Gb)
- ROM:** SSD SATA / SSD MSATA (120, 240Gb) / HDD SATA (500Gb, 1Tb) \* Consult other capacities.
- Audio:** Realtek HD ALC662. 1 x Line-out
- LAN:** Realtek RTL8111E 10/100/1000Mbps. Wake on Lan.
- IP Protection:** IP50. Dust entry cannot be avoided, but it must not enter in such a quantity that it interferes with the correct operation of the equipment. No water protection. Waterproof box: For higher IP protection (OPTIONAL)
- Wireless:** Mini PCI Express Intel 7260BN. WiFi 802.11 b/g/n (OPTIONAL)
- GPS:** Mini PCI Express u-Blox pci-5s-1 - 500. (OPTIONAL)
- 3G/GPS:** Mini PCI Express Huawei EM770w. (OPTIONAL)
- Dimensions:** 134 x 126 x 38 mm (LxWxH)
- Weight:** 0.65 Kg
- Packing:** Individual box; PC, Power supply, Power cable, Drivers and a VESA bracket to mount the PC on a monitor. Possibility of mounting on DIN rail with accessory (optional).



Frontal



Rear

CONNECTIVITY OPTIONS

PRODUCT VALUES

- > Very low power consumption.
- > Small computer.
- > Good performance at a very low cost.
- > Resistant to aggressive environments; dust, grease, vibrations.
- > Resistant to high temperatures and humidity.
- > Expandable equipment in its configuration, up to 8gb of RAM memory.
- > Possibility of Wifi / GPS connection.

MOST COMMON APPLICATIONS

- > Interactive multimedia kiosks
- > Assembly with desktop monitors
- > Industrial control systems (ICS)
- > HMI control panels
- > Distributed control systems / SCADA
- > Data acquisition systems (DAQs)
- > Integration in electrical panels
- > Factory assembly lines
- > Assembly in transport vehicles
- > Wireless station (Wifi/4G/GPS)
- > Outdoor advertising and Digital Signage.

APPLICATION SECTORS

- > Hospitality industry
- > Kiosk industry
- > Automotive
- > Data Centers
- > Distribution
- > Naval Sector
- > Pharmaceutical Industry
- > Transport and Logistics
- > Meat Industry
- > Fishing vessels
- > Shipyards

SOME SUCCESS STORIES

- > Advertising totem
- > Integration into production lines
- > Restaurant chains

ALTERNATIVE REFERENCES

- > Pc industrial J1900
- > Pc industrial NUC i5 5300u
- > Pc industrial i5 6200u

**WiFi module:** Intel 7260BN  
**WiFi antenna:** Yes  
**Connection cable:** Yes  
**SMA extension cable:** Optional



**GPS module:** u-Blox pci-5s-1-500  
**GPS antenna:** Yes  
**Connection cable:** Yes  
**SMA extension cable:** Optional



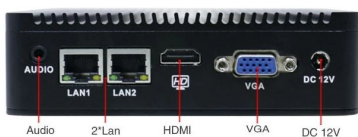
CERTIFICATIONS



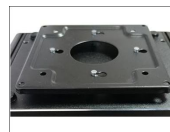
CONNECTIONS

ANCHOR TYPE

DIMENSIONS



VESA mount (included)



DIN accessory (optional)

