

Panel PC Serie

Fanless Industrial Computers

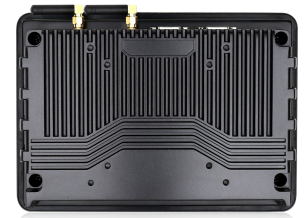
Industrial Components



Elevation

Series of industrial touch panel pc's of professional range with small screen for installations with little space. Different sizes 7" / 8" / 10.1" / 11.6". Celeron J4125 processor.

Aluminium alloy structure. IP65 dust and waterproof front panel with capacitive touch screen. Specially prepared for heat dissipation. Supports 12v and 36v voltage.



Back

TECHNICAL SPECIFICATIONS

- 7" Panel**
- Native resolution: 1024x600
  - Contrast: 500:1 / Brightness: 300cd/m2
  - Format: 16:9
  - Operating Temp.: -10 ~ 60 °C
- 8" Panel**
- Native Resolution: 1024x768
  - Contrast: 800:1 / Brightness: 300cd/m2
  - Format: 4:3
  - Operating Temp.: -10 ~ 60 °C
- 10.1" Panel**
- Native Resolution: 1280x800
  - Contrast: 1000:1 / Brightness: 300cd/m2
  - Format: 16:10
  - Operating Temp.: -10 ~ 60 °C
- 11.6" Panel**
- Native Resolution: 1920x1080
  - Contrast: 1000:1 / Brightness: 300cd/m2
  - Format: 16:9
  - Operating Temp.: -10 ~ 60 °C

OTHER TECHNICAL DATA

- 2 USB 3.0 and 2 USB 2.0 ports. - Wifi included Intel N-7260 802.11bgn.
- Video output to 2nd VGA and HDMI standard display.
- Industrial LCD display with multi-language OSD panel.
- 7mm **aluminium alloy** front bezel housing, durable and perfect heat dissipation.
- **Multi-point capacitive touch screen.**
- Compatible with **Windows 7 / 10 / 11, Linux** operating systems.
- 5ms greyscale response time.
- LED backlight type, use length≥50000h Display colour: 16.7 million
- Viewing angle 160/160° (customisable 178° full viewing angle)
- Number of touches ≥ 50 million times
- Power supply 4A. External power adapter
- Power output 100-240V, 50-60HZ
- Input voltage 12-36V.** Power ≤15W
- Anti-static contact 4KV-air 8KV**
- GB2423 anti-vibration standard**
- Anti-EMC interference/EMI** anti-electromagnetic interference
- Ambient temperature <80%, non-condensing. Working temperature -10°C~60°C
- Audio input and output

PORTS I/O

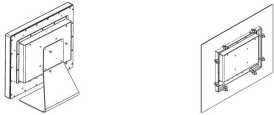


INSTALLATION METHODS

ASSEMBLY OPTIONS

VESA. 100x100mm  
75x75mm

PANEL MOUNT



PANEL MOUNTING SYSTEM



PRODUCT VALUES

- > Small size for space-saving installations.
- > Touchscreen monitor for indoor use.
- > Resistant to aggressive environments; dust, vibrations. High voltages.
- > Resistant to high temperatures and humidity.
- > Expandable equipment in its configuration: resolution / luminance / touch technology.

MOST COMMON APPLICATIONS

- > Industrial field control.
- > Display devices.
- > Telecommunications and network rooms.
- > Monitors for trains, metro stations and harbours.
- > Standard military displays.
- > Military vehicles.
- > Warships
- > Use in lifts, public places and buildings.

FIELDS OF APPLICATION

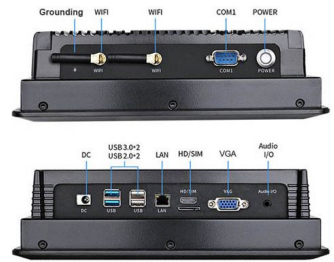
- > Automation.
- > Transport and logistics.
- > Agricultural engineering.
- > Meat industry.
- > Aerospace.
- > Automotive.
- > Data Centers.
- > Distribution.
- > Naval Sector.
- > Pharmaceutical Industry.
- > Transmission applications.

SUCCESS STORIES

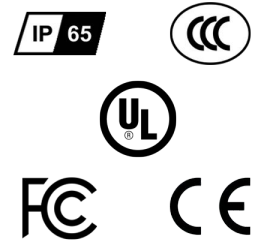
- > Assembly in outdoor kiosks
- > Factory assembly.
- > Solutions for military equipment.

ALTERNATIVE REFERENCES

- > ePX TH TH CI i5 6200u
- > ePX11 CL-4205U TPM

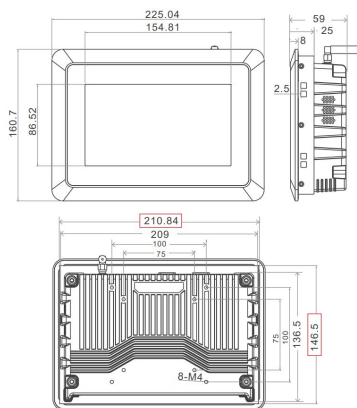


CERTIFICATIONS

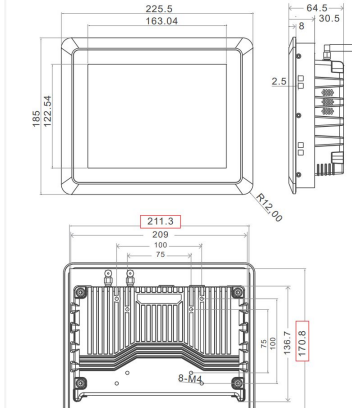


DIMENSIONS

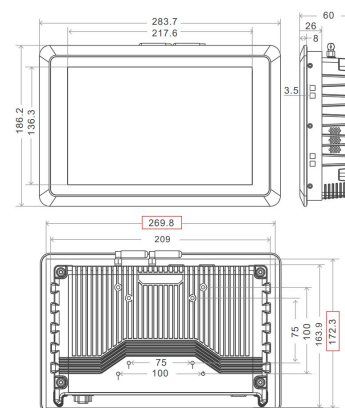
DRAWING 7" PANEL



DRAWING 8" PANEL



DRAWING 10.1" PANEL



DRAWING 11.6" PANEL

