

Panel PC Series

Fanless Industrial Computers

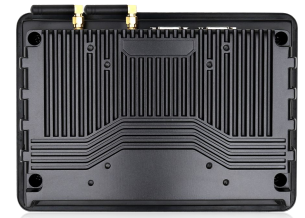
Industrial Components



Elevation

Series of professional range industrial touch panel pc's with small screen for **installations** with little space and in **outdoors**. Different sizes 7" / 8" / 10.1" / 11.6". Processor Celeron J4125 (intel 9th generation).

Passive cooling system without the use of fans. Front protected against water, IP65 protection on the front. **High brightness 1000 nits screen with optical treatment** to be readable in the sun and improve its protection. **Wide voltage range of 9V-24V**.



Rear

TECHNICAL SPECIFICATIONS

- 7" Panel**
 - Native resolution: 1024x600
 - Contrast: 500:1 / Brightness: 1000cd/m2
 - Format: 16:9 - Operating Temp.: -10 ~ 60 °C
- 8" Panel**
 - Native resolution: 1024x768
 - Contrast: 800:1 / Brightness: 1000cd/m2
 - Format: 4:3 - Operating Temp.: -10 ~ 60 °C
- 10.1" Panel**
 - Native Resolution: 1280x800
 - Contrast: 1000:1 / Brightness: 1000cd/m2 -
 - Format: 16:10 - Operating Temp.: -10 ~ 60 °C
- 11.6" Panel**
 - Native resolution: 1920x1080
 - Contrast: 1000:1 / Brightness: 1000cd/m2
 - Format: 16:9 - Operating Temp.: -10 ~ 60 °C

OTHER TECHNICAL DATA

- 2 COM RS232 ports from 10.1", for 7" and 8" panel pc not default (optional).
- 2 USB 3.0 and 2 USB 2.0 ports. - Wifi included Intel N-7260 802.11bgn.
- Video output to 2nd VGA and HDMI standard display - Industrial LCD display with multi-language OSD panel - Front bezel housing made of 7mm aluminium alloy, durable and perfect heat dissipation
- Multi-point **capacitive touch screen**
- Compatible with operating systems **Windows 7 / 10 / 11, Linux**.
- Greyscale response time 5ms.
- LED backlight type, use length ≥ 50000h Display colour: 16.7 million
- Viewing angle 160/160° (customisable 178° full viewing angle)
- Number of touches ≥ 50 million times
- Power supply 4A. External power adapter
- Power output 100-240V, 50-60HZ
- Input voltage 12-24V**. Power ≤ 15W
- Anti-static contact 4KV-air 8KV**
- GB2423 anti-vibration standard**
- Anti-EMC interference/EMI** anti-electromagnetic interference
- Ambient temperature < 80%, non-condensing. Working temperature -10°C ~ 60°C Audio input and output

I/O PORTS



INSTALLATION METHODS

MOUNTING OPTIONS

VESA. 100x100mm
75x75mm

PANEL MOUNT



PANEL MOUNTING SYSTEM



PRODUCT VALUES

- > Small size for space-saving installation.
- > Touchscreen monitor for outdoor use.
- > Resistant to aggressive environments; dust, vibrations. Resistant to high temperatures and humidity.
- > Equipment expandable in its configuration: resolution / luminance / touch technology..

MOST COMMON APPLICATIONS

- > Outdoor kiosks or totems.
- > Display devices.
- > Telecommunications and network rooms.
- > Monitors for trains, metro stations and harbours.
- > Standard military displays.
- > Military vehicles
- > Warships
- > Use in lifts, public places and buildings > Use in lifts, public places and buildings

FIELDS OF APPLICATION

- > Automation.
- > Transport and Logistics.
- > Agricultural engineering.
- > Meat industry.
- > Aerospace.
- > Automotive.
- > Data Centers.
- > Distribution.
- > Naval sector.
- > Pharmaceutical industry.
- > Transmission applications.

SOME SUCCESS STORIES

- > Assembly in outdoor kiosks
- > Factory assembly.
- > Solutions for military equipment.

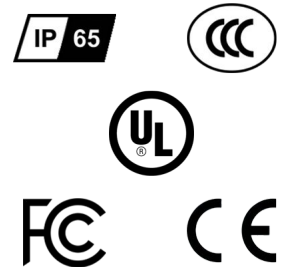
ALTERNATIVE REFERENCES

- > ePX17 TH i5 6200u-EXT
- > ePX215 TH i5 6200u-EXT



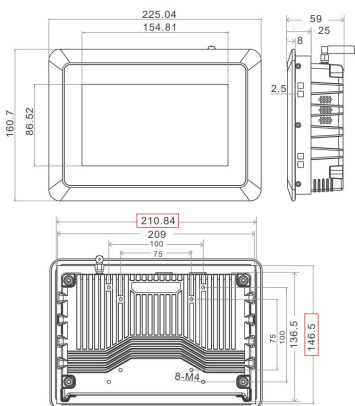
MODELO 10,1"

CERTIFICATIONS

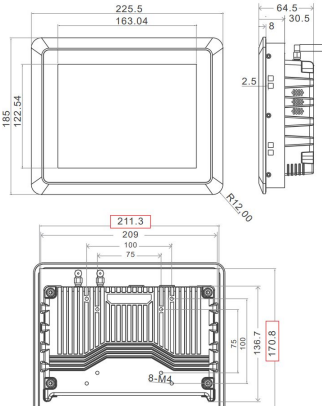


DIMENSIONS

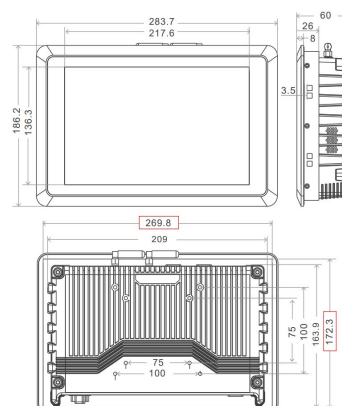
DRAWING PANEL 7"



DRAWING PANEL 8"



DRAWING PANEL 10,1"



DRAWING PANEL 11,6"

