

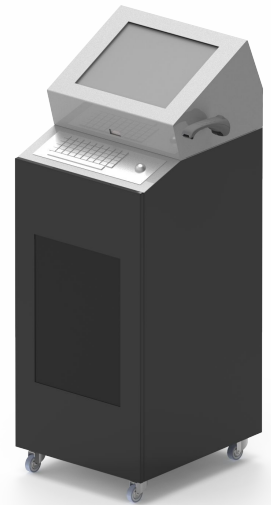
**TRACEABILITY, CONTROL AND MONITORING.**  
For manufacturing and storage processes in industry.

Allows the integration of a 12", 15" or 17" PC Panel, large label printer, to serialise or identify product or manufacturing batch.

The device has a cave that allows us to use an autonomous barcode or QR reader. It integrates an IP65 or IP68 keypad, specially designed for environments with dirt or dust.

It has 5 wheels, one of them on the front door with two sliders. It can incorporate a fingerprint, RFID or QR reader. It has forced extraction, removing the internal heat, but does not allow dust to pass through.

It can be customised in any RAL colour and/or with cut vinyl, digital image and fretwork to adapt it to the client's corporate image.



PRODUCT PROFILE

**Manufacturer:** Grupo EOS Ibérica.  
**Origin:** Manufactured and assembled in Spain.

**Production:**  
> 4 weeks (estimated time).  
**Material:**  
> 1.5/ 3 mm AP2 steel sheet.  
**Flanges/Inner fastenings:**  
> Galvanised sheet metal.  
**Finish:**  
> High resistance epoxy paint.  
**Watertightness and sealing:**  
> IP63

**Dimensions:** > 1288x470x546 mm;  
> 1288x470x546 mm.  
**Structure weight:**  
> 50 kg approx.  
**Use:**  
> Indoor.

STANDARD SPECIFICATIONS

**Display:**  
> 24/7 Industrial LCD.  
> 12", 4:3 (horizontal).

**Accesses:**  
> 1 door with two sliding doors, lock and scroll wheel.

**Connections:**  
> Internal power strip with I/O switch.  
> 3 m power cable.

**Structure colour** ● Textured or smooth.  
**Colour of the front** ○ ● RAL 9003/9007 plain.

OPTIONAL COMPONENTS

**Touch screen:**  
> IR 3mm or capacitive 6mm technology.  
**Fanless Industrial PC:**  
> Atom /Celeron/ i3/ i5/ i7.  
**Operating System:**  
> Android, Windows or Linux.  
**External Connections:**  
> RJ45/ IEC/ I/O switch/ WiFi antenna.  
**Electrical panel:**  
> Terminal block, circuit breaker and differential.  
> Power supplies 5/12/24v.  
**Fixing:**  
> Anchors for fixing to floor or counter.  
**Support:**  
> 4 levelling feet.  
**Personalisation/Customisation:**  
> Cut vinyl/digital image.  
> Airbrushing or multicolour graffiti.  
> Industrial painting in various RAL Colours.

OPTIONAL ADAPTATIONS

**Screen resolution:**  
> 15" o 17".  
**Readers:**  
> Barcode.  
> Fingerprint reader.  
> RFID.  
> QR.  
**Cooling system:**  
> Forced extraction.

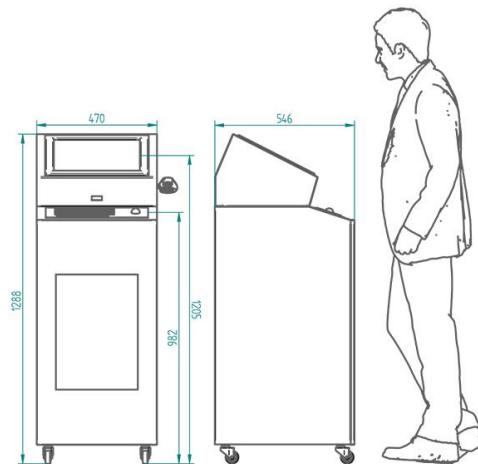
PRODUCT VALUES

> Compact.  
> Mobility.  
> Large space for customising the front and sides with colours, vinyls, digital image, etc.  
> Traceability.

ALTERNATIVE REFERENCES

> eCart

PRODUCT SIZES AND PRODUCT VERSIONS



MOST COMMON APPLICATIONS

> Quality control.  
> Self-payment.  
> Ticket sales.  
> Citizen cashier.  
> Check-in for business reception.  
> Stock storage.

MOST COMMON SECTORS

> Tourism, hotels and restaurants.  
> Pharmacies.  
> Franchises.  
> Supermarkets (Quick Checkout)  
> Museums and libraries.  
> Public administration.  
> Banking and insurance.  
> Service stations.  
> Underground, train and bus stations.

SUCCESS STORIES



DETAIL

SUCCESS STORIES

DETAIL